



## Cholera Weekly SitRep as of 10<sup>th</sup> December 2017

### Borno State Ministry of Health

#### Highlights

- 8 additional cases were reported between 4<sup>th</sup> and 10<sup>th</sup> December 2017
- Last case reported on the 5<sup>th</sup> December 2017
- No death reported.
- No cases reported from Dikwa, MMC, Mafa and Jere.

#### Epidemiological summary

The total number of cases reported in Borno state since the inception of the outbreak stands at 5365, with 61 deaths (CFR = 1.1%). 2692 cases have been reported in the Muna corridor (Jere LGA), 1761 cases in Monguno and 98 cases in Guzamala. The number of cases reported from Dikwa, MMC and Mafa stand at 736, 58 and 20 respectively and have remained so for over eight weeks.

Out of the 431 samples tested using RDTs, 354 (82%) were positive while 175 (46%) of 381 samples were culture positive.

	Jere	Monguno	Guzamala	TOTAL*
<b>Cases</b>				
New cholera suspected cases	0	3	5	<b>8</b>
Cumulative cholera suspected cases	2692	1761	98	<b>5365</b>
<b>Deaths</b>				
New deaths	0	0	0	<b>0</b>
Cumulative deaths	43	3	0	<b>61</b>
<b>Laboratory</b>				
Number of specimen tested (RDT)	306	49	26	<b>431</b>
Specimen Positive RDT	257	38	22	<b>354</b>
Number of samples cultured	270	36	26	<b>381</b>
Specimen Positive Culture	107	25	13	<b>175</b>

*Table 1: Number of suspected cholera cases reported as of 10<sup>th</sup> December 2017*

**\*NB:**

- The total number of cases reported from Dikwa, Mafa and MMC is 814, cumulative deaths are 15.
- The total number of samples tested using RDT in these LGAs is 50, 37 of which were positive while 30 out of 49 were culture positive.

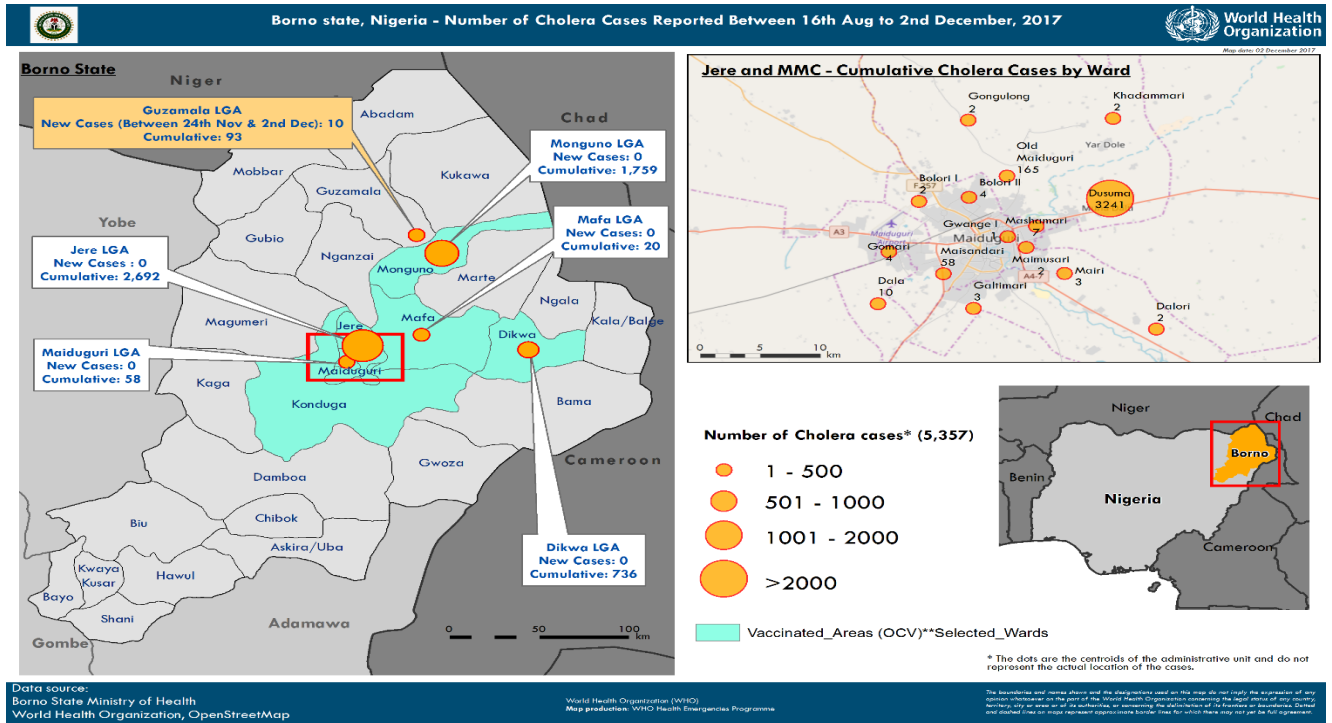


Figure 1: Map of Borno state showing affected LGAs.

The total number of cases reported in Borno between 4<sup>th</sup> and 10<sup>th</sup> December 2017 is 8, (Fig 2b). 5 cases reported during this week were from Guzamala (Fig. 5b) and 3 case from Munguno. For the eight week, no cases have been reported from Dikwa (Fig. 4b), Mafa and MMC LGAs. **The Last case reported was on the 5<sup>th</sup> December 2017 and 5 days without any case reported from any part of the state were cases were previously recorded.**

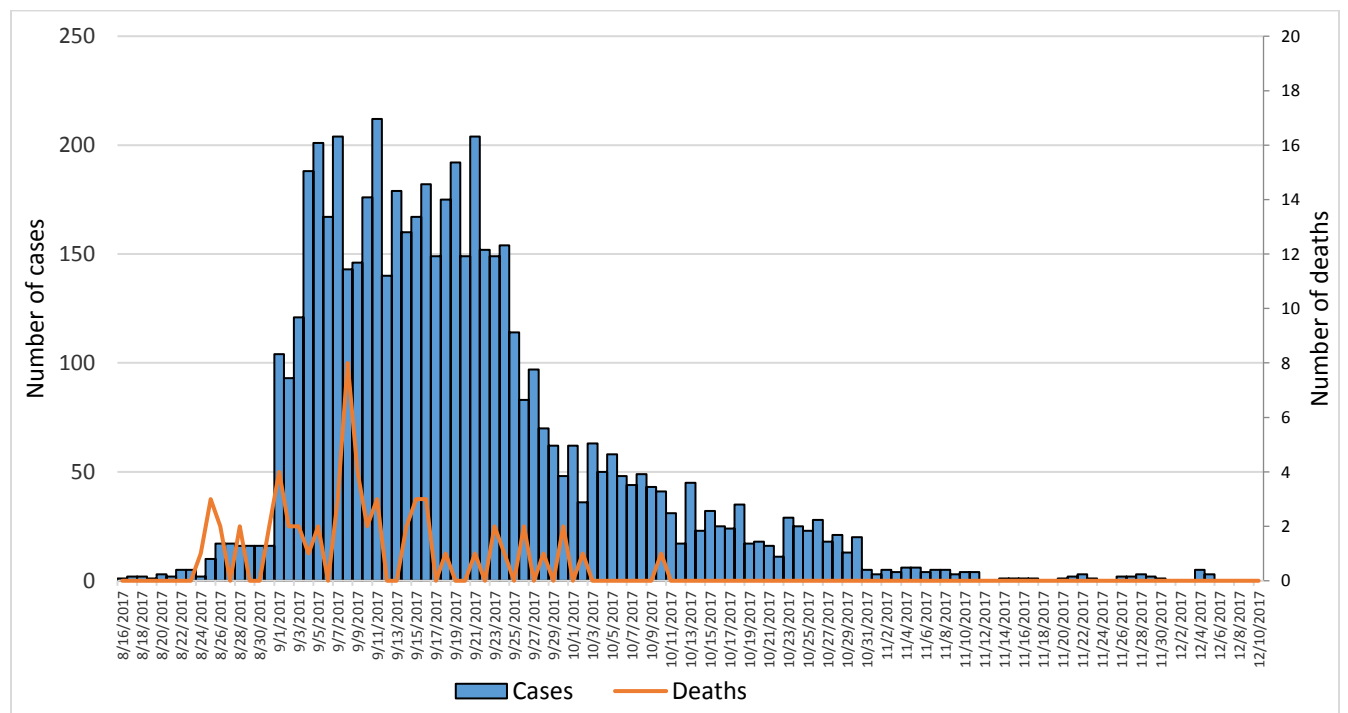


Fig 2a: Daily Epi-curve of cholera cases and line-curve showing number of deaths in Borno state

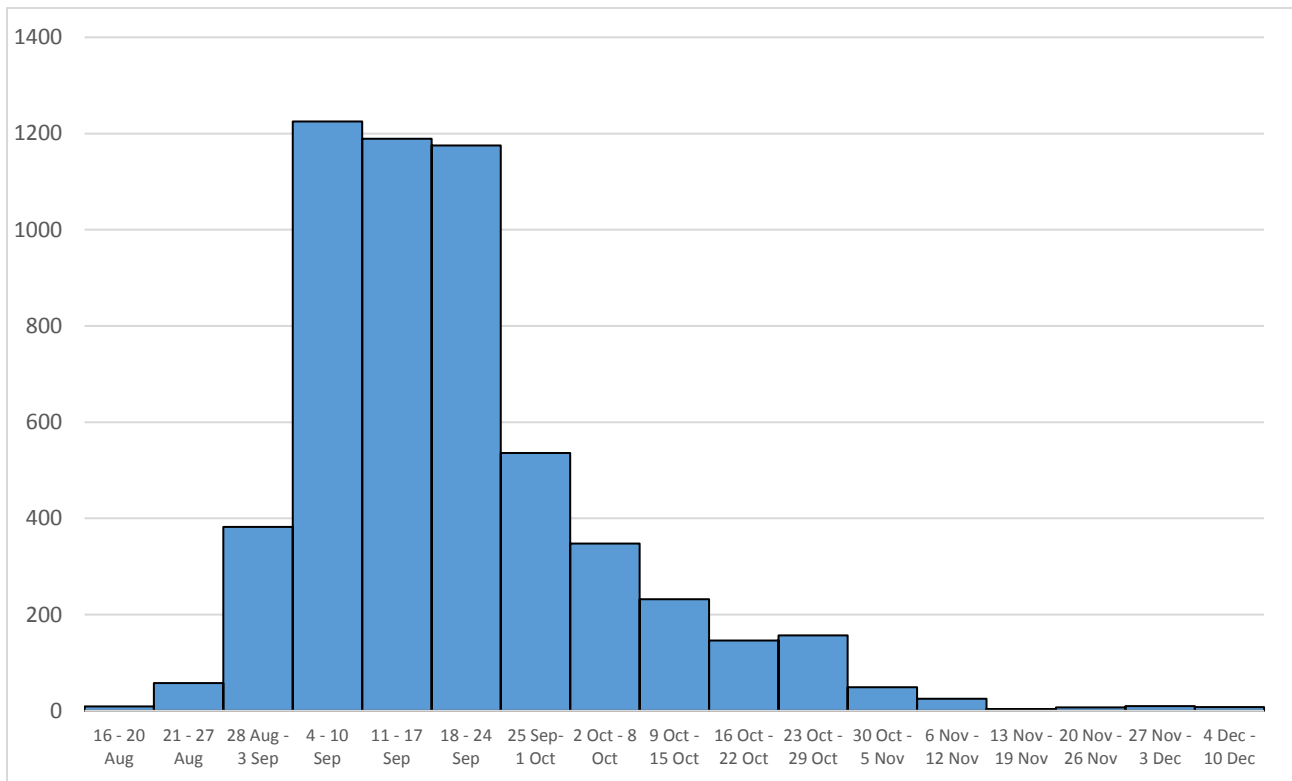


Fig.2b: Weekly Epi-curve of cholera cases in Borno state by weeks

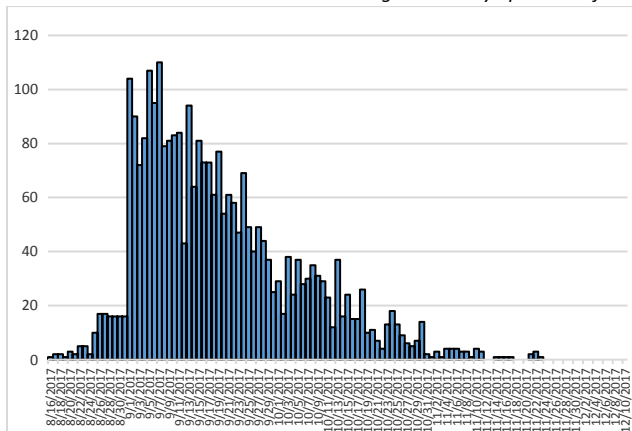


Fig.3a: Daily Epi-curve of suspected cholera cases in Jere and MMC

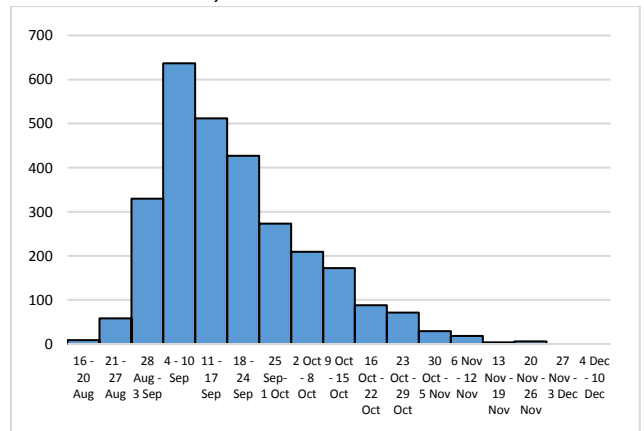


Fig.3b: Weekly Epi-curve of suspected cholera cases in Jere and MMC

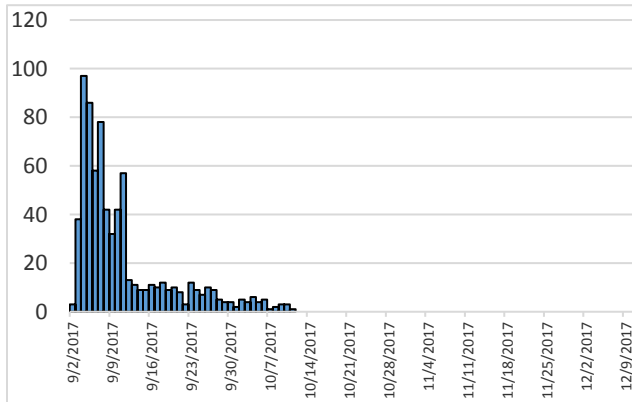


Fig 4a: Daily Epi-curve of suspected cholera cases in Dikwa LGA

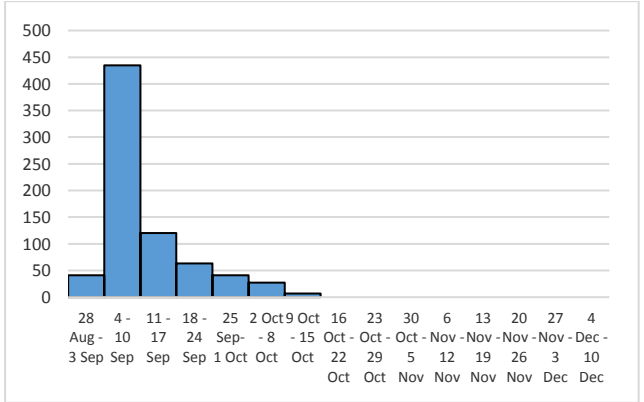


Fig 4b: Weekly Epi-curve of suspected cholera cases in Dikwa LGA

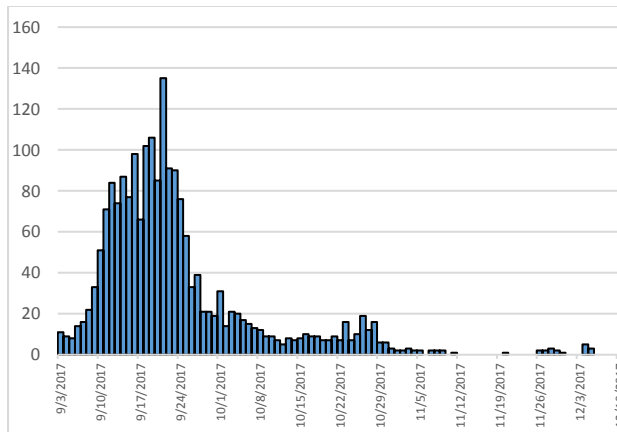


Fig.5a: Daily Epi-curve of suspected cholera cases in Monguno

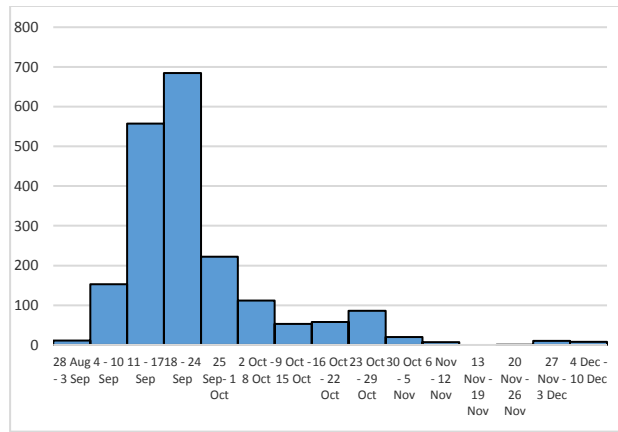


Fig.5b: Weekly Epi-curve of suspected cholera cases in Monguno

## Response

### 1. Surveillance

- No alert this period.
- No cases found during community case search in Jere LGA, in Custom area, Muna IDP camp, Shuwari A, Madinatu IDP camp, Fariya IDP camp, Bulabulin Tamsuwa, El- minskin, Bulabulin Ngaramnam host community.
- Guzamala LGA, during ACS identified, on the 4<sup>th</sup> December 2017, 5 cases reported All cases are from Mailari ward while Munguno LGA reported 3 cases on the 5<sup>th</sup> December 2017
- Priority locations identified and communicated to WASH and risk communication teams for priority intervention in Guzamala LGA: Mairari ward

### 2. Case management

	Jere	Monguno	Total
<b>Admissions</b>			
New admissions	0	0	0
Number on Admission	0	0	0
New Discharges	0	0	0

Table 2: In-patient admissions to CTUs

- The two MSF CTUs closed down. Referral centre is Dalaram clinic in Jere LGA.
- All cases referred to health center in Gowaram, Guzamala LGA
- All cases have been treated and discharged

### 3. WASH

- Sensitization on cholera prevention messages and importance of good sanitation and Hygiene practices are ongoing.

### 4. Vaccination

- OCV campaign commenced on 9<sup>th</sup> December 2017.
- Total number of persons vaccinated on Day 1 stands at – 111,221
- Coverage survey to be conducted between 18 – 22 December, 2017.